



## Changing Time or Key Signatures, Guitar Chords

Em Am7 G D Eb

Gb

1 A D 2 G F Em D7 C

This musical example shows a sequence of chords and melodic lines across two staves. The first staff starts in 6/8 time with an E minor chord, changes to 9/8 with an A minor 7 chord, then to 4/4 with G and D chords, and ends with an E-flat chord in a new key signature. The second staff continues in the new key signature with a G-flat chord, followed by a first ending (A, D) and a second ending (G, F, E minor, D7, C).

## Strange tuplet cases

This musical example features various tuplets across two staves. The first staff includes triplets, a triplet of eighth notes, a triplet of sixteenth notes, a triplet of eighth notes, a triplet of eighth notes, and a triplet of eighth notes. The second staff includes a triplet of eighth notes, a triplet of eighth notes, a triplet of eighth notes, a triplet of eighth notes, a triplet of eighth notes, and a triplet of eighth notes.

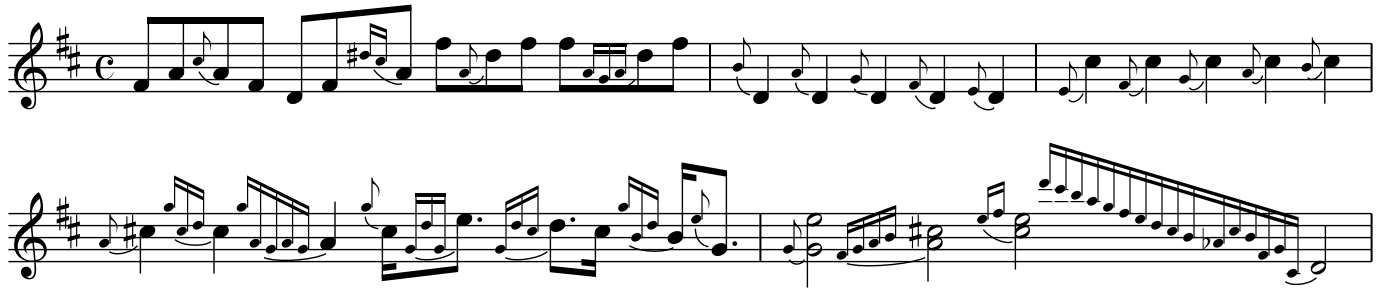
## Chords with many accidentals

This musical example shows chords with many accidentals across two staves. The first staff features a series of chords with many sharps and flats, including a chord with a double sharp and a double flat. The second staff continues with more complex chords, including a chord with a double sharp and a double flat.

## Horizontal beams

This musical example features horizontal beams across three staves. The first staff shows a series of eighth notes beamed together. The second staff shows a series of eighth notes beamed together. The third staff shows a series of eighth notes beamed together.

## Gracenotes



## Vocals

Vocal melody in G major, common time. The melody is written on two staves. The first staff includes lyrics and chords: Gm, C7, F, and Dm. The second staff continues the melody with lyrics and chords: Bb, Gm, and Eb. The melody ends with a long note on 'true' followed by a line.

Close your eyes and I'll kiss you, to - mor - row I'll miss you; re -

- mem - - ber I'll al - - ways be true. \_\_\_\_\_