

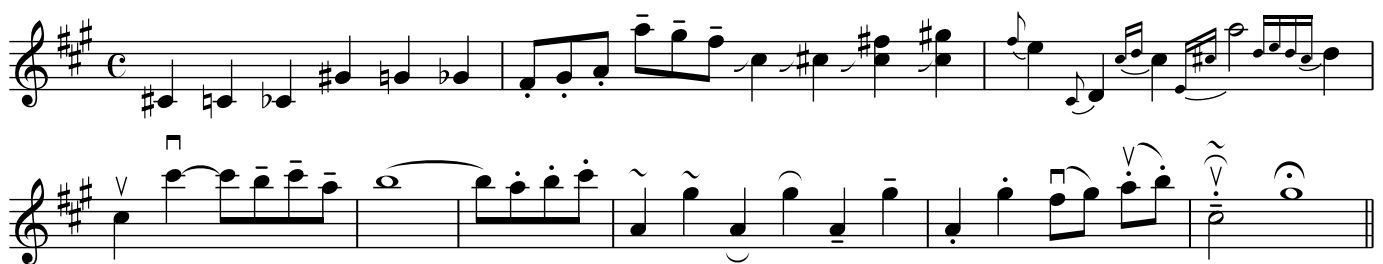
Scale
Second Title
Third Title



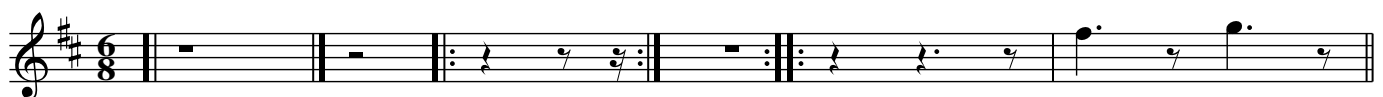
Short and Long Notes, Beams and Tuplets



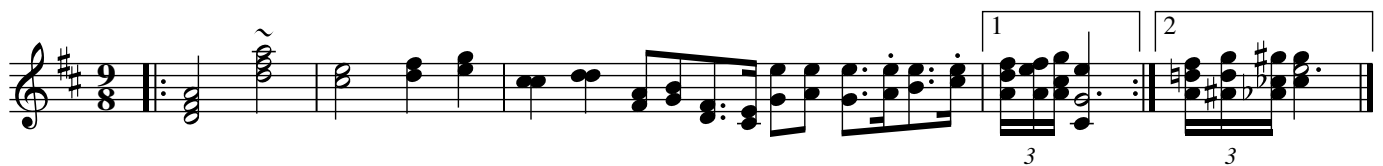
Key signature, Accidentals and Decorations



Bars and Rests



Chords, Unions, First and Second Endings



Slurs and Ties

Title with funny chars like ♭ Çéñô Àçäßö © ...



Changing Time or Key Signatures, Guitar Chords

Em Am7 G D Eb

Gb

1 A D 2 G F Em D7 C

This musical example shows a sequence of chords and melodic lines across two staves. The first staff starts in 6/8 time with an E minor chord (Em) and an A minor 7th chord (Am7), then changes to 4/4 time with a G major chord (G) and a D major chord (D). The second staff continues in 4/4 time with a G-flat major chord (Gb), then a first ending in A major (A) and D major (D), followed by a second ending in G major (G), F major (F), E minor (Em), D7, and C major (C). The key signature changes from one sharp (F#) to one flat (Bb) and then to two flats (Bb, Eb).

Strange tuplet cases

This musical example features various tuplet groupings across two staves. The first staff includes triplets (3), a triplet of eighth notes (3), a triplet of sixteenth notes (3), a group of four sixteenth notes (4), and another triplet (3). The second staff includes a triplet (3), a triplet of eighth notes (3), a quintuplet (5), a sextuplet (6), and another sextuplet (6). The notation is complex, with many beamed notes and rests.

Chords with many accidentals

This musical example shows chords with many accidentals across two staves. The first staff features a series of chords with many sharps and flats, including a chord with a double sharp (x) and a chord with a double flat (bb). The second staff continues with similar complex chords, including a chord with a double sharp (x) and a chord with a double flat (bb). The notation is dense with accidentals, making it difficult to read.

Horizontal beams

This musical example features horizontal beams across three staves. The first staff shows a series of eighth notes beamed together. The second staff shows a series of eighth notes beamed together. The third staff shows a series of eighth notes beamed together. The notation is dense with horizontal beams, making it difficult to read.

Gracenotes



Vocals

Gm C7 F Dm

Close your eyes and I'll kiss you, to - mor - row I'll miss you; re -

Bb Gm Eb

- mem - - ber I'll al - - ways be true. _____