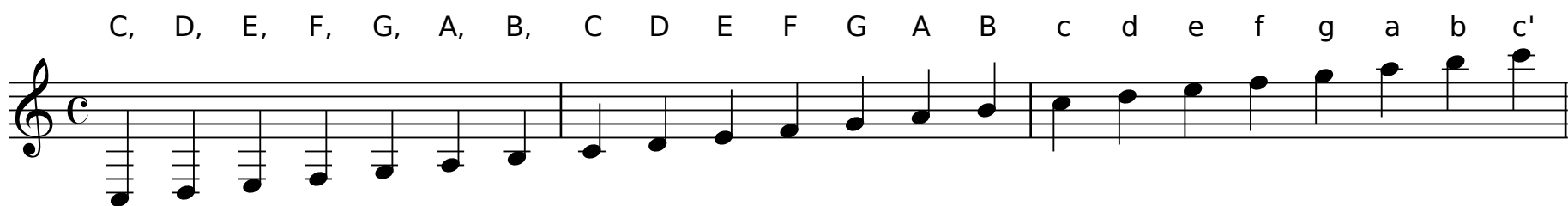


Scale  
Second Title  
Third Title

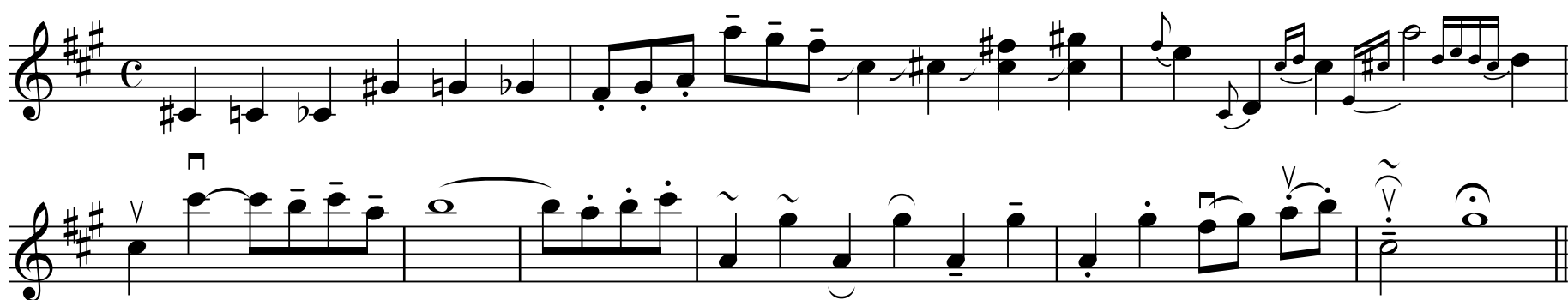


Short and Long Notes, Beams and Tuplets

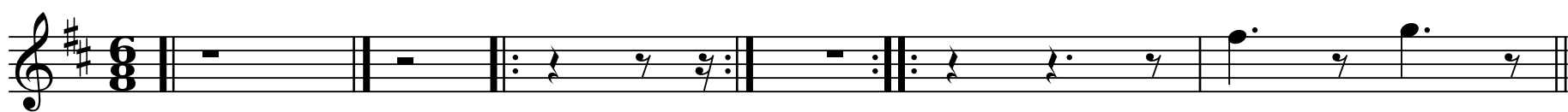
Trad



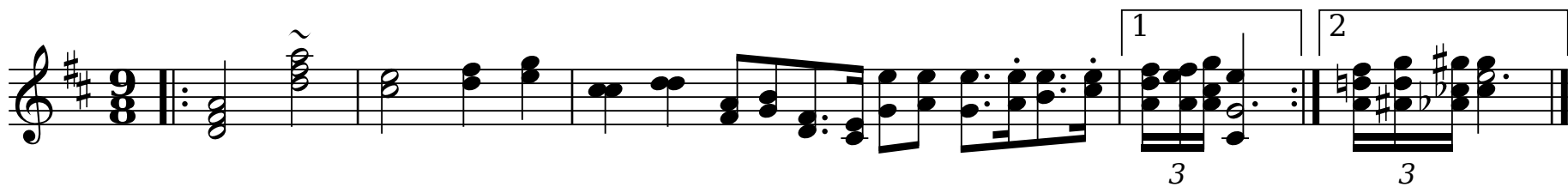
Key signature, Accidentals and Decorations



Bars and Rests



Chords, Unions, First and Second Endings



Slurs and Ties

Title with funny chars like Ъ Çěňô Àçăßö © ...



Changing Time or Key Signatures, Guitar Chords

Em Am7 G D Eb

Gb

1 A D 2 G F EmD7 C

This musical example illustrates changes in time signature and key signature. The first staff starts in 6/8 time with an E minor chord (Em), changes to 9/8 time with an A minor 7th chord (Am7), then to 4/4 time with G and D chords, and ends with an E-flat chord (Eb) in a key of three flats. The second staff continues in three flats, starting with a G-flat chord (Gb), then features a first ending with A and D chords, and a second ending with G, F, E minor 7th (EmD7), and C chords.

Strange tuplet cases

This musical example shows various unusual tuplet groupings. The first staff contains triplets of eighth notes, a triplet of eighth notes followed by a quarter note, a triplet of eighth notes followed by a quarter note, a triplet of eighth notes followed by a quarter note, a triplet of eighth notes followed by a quarter note, a triplet of eighth notes followed by a quarter note, and a triplet of eighth notes followed by a quarter note. The second staff contains a triplet of eighth notes, a triplet of eighth notes, a triplet of eighth notes followed by a quarter note, a triplet of eighth notes followed by a quarter note, a triplet of eighth notes followed by a quarter note, a triplet of eighth notes followed by a quarter note, and a triplet of eighth notes followed by a quarter note.

Chords with many accidentals

This musical example shows chords with many accidentals. The first staff contains a series of chords with many sharps and flats, including a chord with a double sharp (x) and a chord with a double flat (bb). The second staff continues with more complex chords, including a chord with a double sharp (x) and a chord with a double flat (bb).

Horizontal beams

This musical example shows horizontal beams. The first staff contains a series of eighth notes with horizontal beams. The second staff contains a series of eighth notes with horizontal beams. The third staff contains a series of eighth notes with horizontal beams.

Gracenotes

A musical staff in treble clef with a key signature of one sharp (F#) and a common time signature (C). The staff contains two lines of music. The first line features a series of eighth and sixteenth notes, some beamed together, and a few quarter notes. The second line continues the melodic line with similar rhythmic patterns, ending with a descending scale of eighth notes.

Vocals

A musical staff in treble clef with a key signature of one flat (Bb) and a common time signature (C). The staff contains two lines of music. The first line has a repeat sign after the first two notes. Above the staff, the chords Gm, C7, F, and Dm are written above the first, second, third, and fourth measures respectively. The second line continues the melody with a Bb chord above the first measure and Gm and Eb chords above the second and third measures. The lyrics are written below the staff.

Close your eyes and I'll kiss you, to - mor - row I'll miss you; re -

- mem - ber I'll al - ways be true. \_\_\_\_\_